

# USER GUIDE

**muv**<sup>®</sup> ELITE

BY

 **CEGA** INNOVATIONS<sup>®</sup>

# WELCOME

The MUV™ ELITE is a safe patient handling system utilized by persons in an operating room or other hospital or clinical environment for the transfer of patients from an operating table to a gurney or other lateral-to-lateral surfaces, such as table to recovery bed or cath lab table to gurney.

The MUV™ ELITE may be ordered with the MUV™ SlimLine, for wall mount installation.

The Multi-Purpose PAD (MP PAD) is intended for use as a single-use transfer sheet that attaches and loads into the MUV™ ELITE and works as a post-transfer absorbent pad.

The SlimLine houses the MUV™ ELITE and the Multi-Purpose PADs in a convenient location for use by healthcare providers.

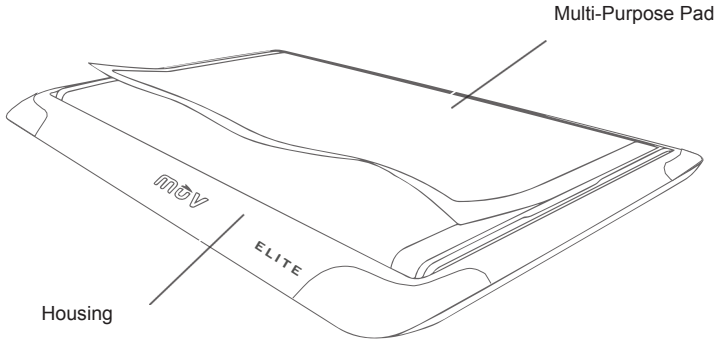


# CONTENTS

<b>mūv</b> ANATOMY	3
SYSTEM STORAGE	4
SYSTEM SETUP	5 - 6
SYSTEM USE	7 - 8
SYSTEM CLEANING	9
TECHNICAL SERVICE AND CARE	10 - 11
SYSTEM SPECIFICATIONS	12
TERMS OF USE & WARRANTY	13 - 14



# mūv<sup>®</sup> ANATOMY



## Reversible Deck

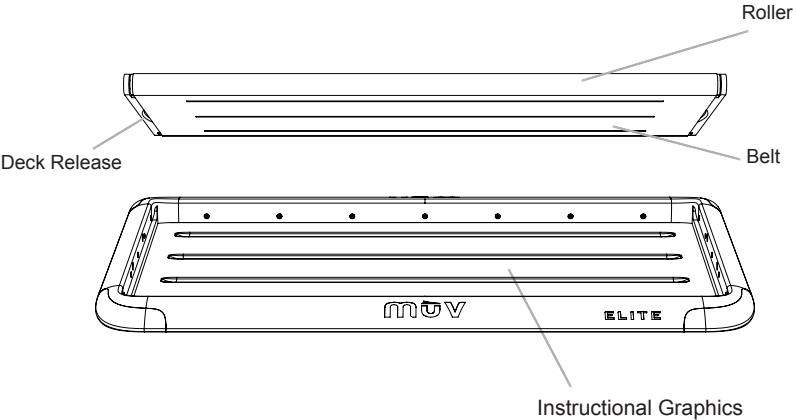


Fig. 3.2



# SYSTEM STORAGE

SlimLine (Wall Mount)

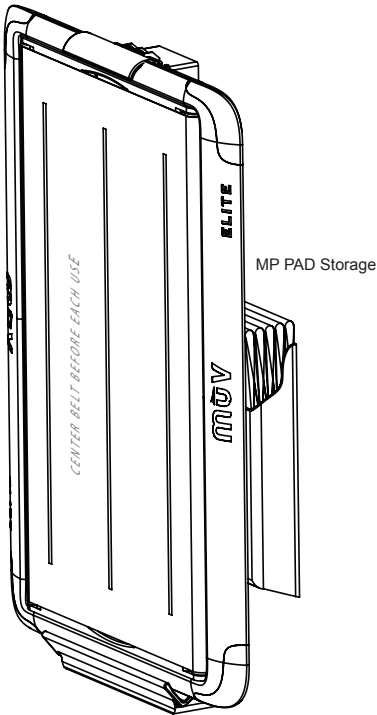


Fig. 4.1

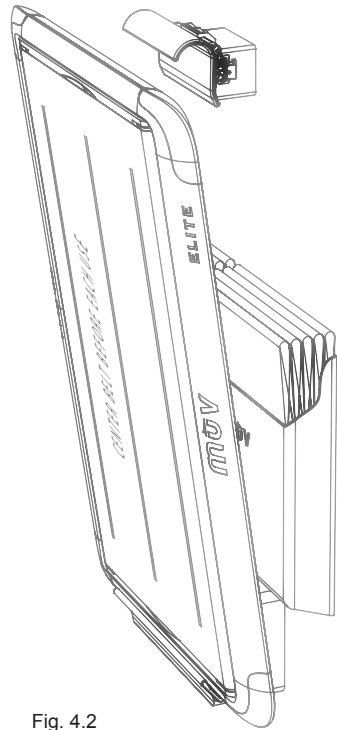


Fig. 4.2



# SYSTEM SETUP

## 1.1 PREP THE MUV™ ELITE

Place the MUV™ ELITE on the bed surface where the patient will be completing the bed-to-bed transfer. Ensure the belt spins freely by centering the belt. Use one Multi-Purpose PAD stored in the integrated dispenser on the SlimLine.

## 1.2 REMOVE ADHESIVE BACKING

Remove the two protective strips from the top of the Multi-Purpose PAD to expose the adhesive. The protective strips are located on the green side of each MP PAD.

## 1.3 APPLY MULTI-PURPOSE PAD TO BELT

Hold the Multi-Purpose PAD by the top corners, adjacent to where the adhesive strips are exposed. On the belt are green graphics to aid MP PAD alignment. Use these green graphics as guides during attachment to the belt (Figs. 6.1 & 6.2.)

## 1.4 LOAD

Push the MP PAD forward to engage the belt. As you push the MP PAD forward, the MP PAD will feed through the MUV™ ELITE housing. Continue advancing the belt forward until the MP PAD and belt completes one full rotation. The ELITE is now ready for use.



# SYSTEM SETUP

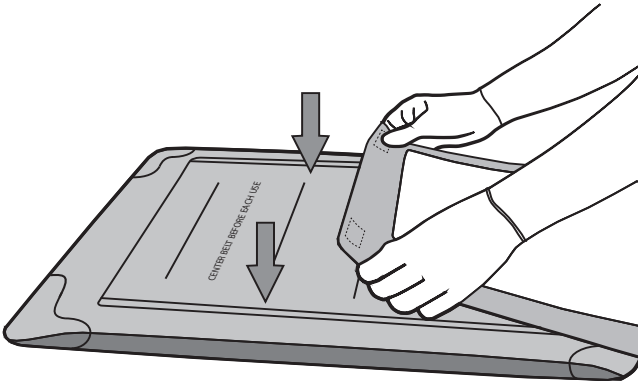


Fig. 6.1

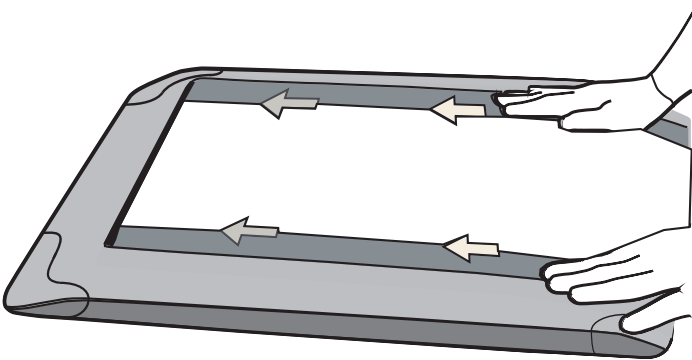


Fig. 6.2



# SYSTEM USE

## 2.1 POSITION PATIENT ON BED

After loading the MUV™ ELITE with the Multi-Purpose PAD, roll the patient to a lateral recumbent position facing away from you (Fig 8.1). Manage and clear cables, tubes, and monitoring equipment before placing the MUV™ ELITE.

## 2.2 PLACE MUV™ ELITE

Place the leading edge of the MUV™ ELITE under approximately 2/3 of the patient's back (Fig. 8.1). Each leading edge has the MUV™ logo on it. The MUV™ ELITE serves as a bridge between the two lateral surfaces.

## 2.3 POSITION PATIENT ON BOARD

Gently roll the patient's back onto the MUV™ ELITE (Fig. 8.2).

## 2.4 TRANSFER STAFF TEAM MEMBER ROLES

Team member 1 engages the MUV™ ELITE by pushing the patient across the MUV™ ELITE. Team member 2 guides the MP PAD to the second bed in a continuous motion (Fig. 8.2). Allow the MUV™ ELITE to do the work of the transfer. Team member 3 guides the feet, while a fourth team member (not pictured) manages the patient's head and airway.

## 2.5 COMPLETE THE TRANSFER

The patient completes the transfer when he or she is on the second lateral surface. The MP PAD stays beneath the patient. No further patient manipulation should be required.

## 2.6 REMOVE MULTI-PURPOSE PAD FROM MUV™ ELITE

Detach the MP PAD by pulling the MUV™ ELITE away from the patient. (In the event the patient is still partially on the MUV™ ELITE following the transfer, simply tip the MUV™ ELITE and pull from under the patient. Always be aware of abrasions or skin integrity issues related to any patient transfer.) When soiled or medically indicated, or as otherwise dictated by your facility's policies, discard the MP PAD in the appropriate receptacle as medical waste.





# SYSTEM USE

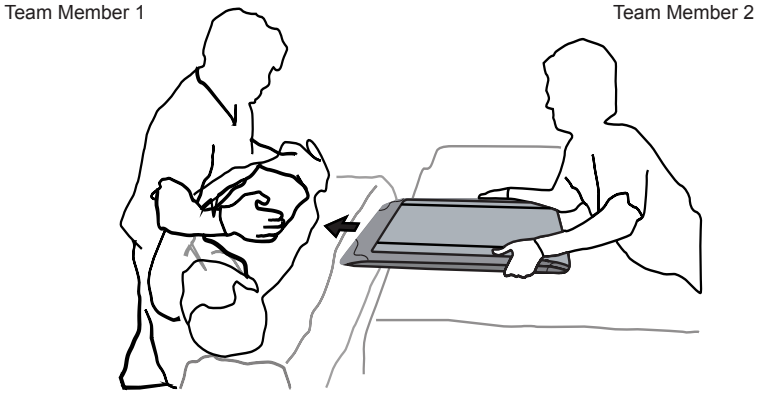


Fig. 8.1

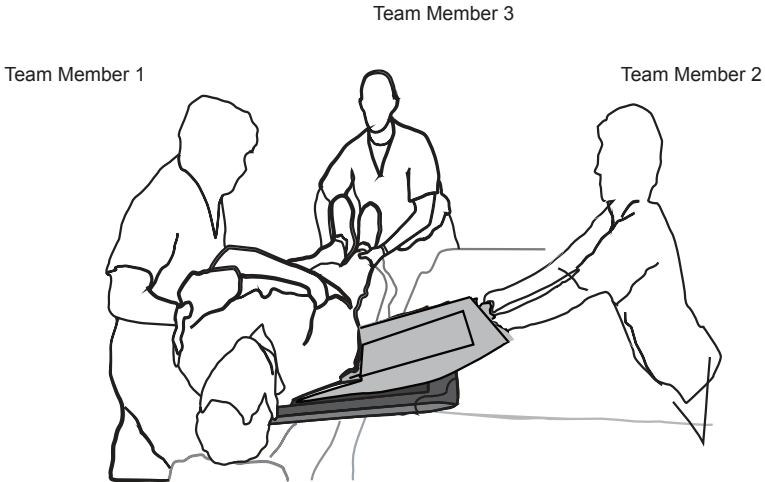


Fig. 8.2



# SYSTEM CLEANING

## **3.1 WIPE DOWN MUV™ ELITE**

Wipe down the MUV™ ELITE after each use with regularly accepted cleaning reagents and cloths (as applicable) used in the operating room for the cleaning of other hard surfaces. Additional cleaning is not generally required. Refer to “Technical Service and Care” on page 10 for additional instructions on proper care and cleaning for the MUV™ ELITE.

## **3.2 RETURN THE MUV™ ELITE TO THE SLIMLINE**

Place the MUV™ ELITE in the SlimLine until next use. Refill the MP PAD dispensers as needed. Each dispenser holds five (5) MP Pads.

## **3.3 MUV™ ELITE STORAGE**

Store the MUV™ ELITE in the SlimLine between uses.



# TECHNICAL SERVICE & CARE

## CLEANING AND DISINFECTION

The MUV™ System should be cleaned and disinfected after each use. Use germicidal wipes containing 0.55% sodium hypochlorite (bleach) or other regularly accepted cleaning reagents/chemicals appropriate for use in a healthcare setting.

**CLEANING** is the removal of visible dirt and debris, but does not reduce the risk for transmission of infectious diseases. The MUV™ ELITE should be cleaned after each use.

**DISINFECTING**, if performed properly, reduces the risk of transmitting infectious diseases. The MUV™ ELITE should be disinfected after each use, including the deck, if indicated. For proper disinfection, you should keep all surfaces wet for at least 60 seconds.

**WARNING:** Always wash your hands well with soap and water before and after handling any MUV™ System component. Each member assisting with the transport of the patient using the MUV™ System should adhere to standard personal protective measures in compliance with hospital, clinic or facility policy.

The cleaning and disinfecting directions provided will not cause any damage or degradation to the MUV™ ELITE.

Please contact the manufacturer for assistance if your device malfunctions for any cause, or if you notice any changes in the functionality or appearance of the MUV™ ELITE due to use or cleaning/disinfection.

Do not drop the MUV™ ELITE as it may damage the MUV™ ELITE, or components of the MUV™ ELITE, and render it unsafe for use with patients. Always store Multi-Purpose PADs in the designated receptacle to ensure they are conveniently available and clean.



# TECHNICAL SERVICE & CARE

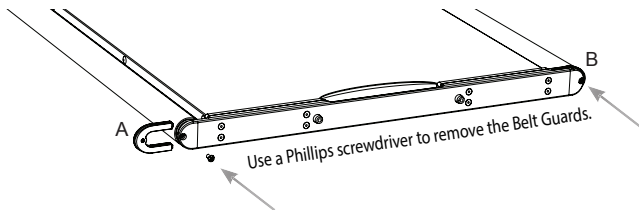
## TO DEEP CLEAN THE MUV™ ELITE WHEN INDICATED

1. Lay the MUV™ ELITE on a flat surface.
2. To access the deck and belt assembly for deep cleaning when contaminated or dirty, depress the two release mechanisms inward. The release mechanisms are located under the belt at the center of the short ends of the deck. (The deck should not require routine removal.)
3. Gently lift up on the deck to remove it for cleaning or service. (Dropping may damage the deck.)
4. To return the deck to the housing, depress the two green release mechanisms and return the deck to the housing. Two pins on each of release mechanism will lock into two round sockets on each side of the MUV™ ELITE housing when you release the green handles.

## TO REMOVE OR REPLACE THE MUV™ ELITE BELT

5. Remove the deck from the housing by following steps 1 and 2 above.
6. Use a Phillips screwdriver to remove Belt Guards A and B on one end of the deck as shown in Fig. 11-1. Each Belt Guard is held in place by a single screw.

Fig. 11-1



7. Slide the belt off the deck to deep clean the deck and rollers or to replace the belt.
8. Replace the belt and re-attach the Deck Guards by reversing step 7, using care to avoid over-tightening the screws.
9. The MUV™ Belt should not be removed for regular cleaning. For information regarding belt replacement kits, please contact the manufacturer or your distributor.



# SYSTEM SPECIFICATIONS

## SYSTEM SPECIFICATIONS

MUV™ Board Life: 24 months (sometimes longer with proper care, except the consumable parts, i.e. MUV™ Belt and Multi-Purpose PAD.)

Storage Temperature Range: 41° - 86 °F

Humidity: 10 - 93% RH

Dimensions: 80 cm (L) x 56 cm (W) x 4 cm (H)

MUV™ ELITE Weight: < 4 kgs.

## CARING FOR YOUR SYSTEM

- Always store the MUV™ ELITE and Multi-Purpose PAD in the SlimLine.
- Wash and dry hands well before handling to keep the MUV™ ELITE and Multi-Purpose PADs free of contaminants.
- Avoid exposing the MUV™ ELITE and Multi-Purpose PADs to excessive humidity, heat, cold, dust, dirt or sunlight.
- Disassembly of the MUV™ ELITE is not permitted (removal of the deck for cleaning and replacement of the belt is not considered disassembly.) If the MUV™ ELITE is not working properly, immediately contact your distributor or the manufacturer.
- When carrying the MUV™ ELITE, hold the MUV™ ELITE close to your body, using both hands. When returning the MUV™ ELITE to the SlimLine, place the MUV™ ELITE gently in the Bottom Mount and push the top of the MUV™ ELITE forward until the top latch closes.

## SUPPLIES

For information on ordering MP PADs, replacement belts, or the SlimLine, please contact your distributor or the manufacturer. Components are subject to “Terms of Use and Warranty” for replacement or replacement by purchase. Visit [CEGACO.COM](http://CEGACO.COM) for further information regarding the MUV™ Patient Transfer System.

CEGA Innovations®, Inc  
Sioux Falls, SD 57108

1-800-440-5605  
[cegaco.com](http://cegaco.com)



# TERMS OF USE & WARRANTY

## **Manufacturer Warranty**

CEGA Innovations®, Inc., hereafter CEGA®, warrants to the original purchaser that the MUV™ ELITE and SlimLine will be free from defects in materials and workmanship for one year from the date of original purchase (except as noted below). During the stated one-year period, CEGA® shall, at no charge, replace a unit found to be defective with an equivalent or current version of the owner's model.

## **Limitations of Warranty**

This warranty is subject to the following exceptions and limitations:

1. This warranty is limited to replacement due to defects in parts or workmanship for the MUV™ ELITE and SlimLine. CEGA® shall not be required to replace any MUV™ ELITE and/or SlimLine units, or components thereof, which malfunction or are damaged due to abuse, accidents, alteration, modification, misuse, neglect, or failure to use the item in accordance with the instructions provided in the User Guide. CEGA® assumes no liability for malfunction or damage to any MUV™ ELITE or SlimLine, or components thereof, caused by the use of consumables other than those manufactured, provided, or recommended by CEGA®. CEGA® assumes no liability for the malfunction or damage to any MUV™ ELITE and/or SlimLine, or components thereof, due to the use of reagents not recommended by CEGA®, or as otherwise outlined in the User Guide.
2. CEGA® reserves the right to make changes in design of the MUV™ ELITE and/or SlimLine without obligation to incorporate such changes into previously manufactured items offered by CEGA®.
3. Notwithstanding any of the foregoing, a 90-day limited warranty is offered by CEGA® for the MUV™ Belt and Multi-Purpose PAD. In the event a MUV™ Belt or Multi-Purpose PAD fails due to a manufacturing or workmanship defect and the purchaser contacts CEGA® within 90 days of the original purchase date and provides documentation of the defect within the same 90-day period, CEGA® shall replace the MUV™ Belt or Multi-Purpose PAD at no cost to the purchaser. No other warranty, express or implied, is offered by CEGA® for the Multi-Purpose PAD and MUV™ Belt and any and all other warranties, express or implied, or specifically excluded.



# TERMS OF USE & WARRANTY

NOTWITHSTANDING ANYTHING TO THE CONTRARY WHICH MAY BE SET FORTH IN THIS OR ANY PRIOR AGREEMENT, TERMS AND CONDITIONS, AND/OR WARRANTY, CEGA® SHALL NOT BE RESPONSIBLE FOR ANY ACTUAL DIRECT, INDIRECT, CONSEQUENTIAL, SPECIAL, INCIDENTAL, EXEMPLARY OR PUNITIVE DAMAGES OF ANY KIND OR NATURE, INCLUDING LOST PROFITS AND LOST BUSINESS REVENUE, ARISING OUT OF OR RELATED TO THE USE OF PRODUCTS OFFERED OR SOLD BY CEGA®, REGARDLESS OF WHETHER SUCH LIABILITY IS ASSERTED ON THE BASIS OF BREACH OF CONTRACT (EVEN IF A FUNDAMENTAL BREACH), BREACH OF WARRANTY (EXPRESS OR IMPLIED), TORT (INCLUDING THE POSSIBILITY OF NEGLIGENCE, MISREPRESENTATION OR STRICT LIABILITY), OR OTHERWISE.

Some states do not allow the exclusion or limitation of incidental or consequential damages, so the limitation or exclusion may not apply to every purchaser of products offered or sold by CEGA®. This warranty provides specific legal rights, and you may also have other rights that vary from state to state.

Purchaser may contact CEGA® by emailing [sales@cegaco.com](mailto:sales@cegaco.com) for warranty service, assistance, most up to date instructions for use, or further instructions for use of the MUV™ Product Line.

## Patents

In accordance with Section 287(a) of Title 35 of the United States Code, the reader is hereby placed on notice of CEGA Innovations's rights in the United States Patents. For the most current patent information, visit [cegaco.com/patents](http://cegaco.com/patents)





CEGA Innovations®, Inc.  
Sioux Falls, SD 57108  
1-800-440-5605  
[cegaco.com](http://cegaco.com)